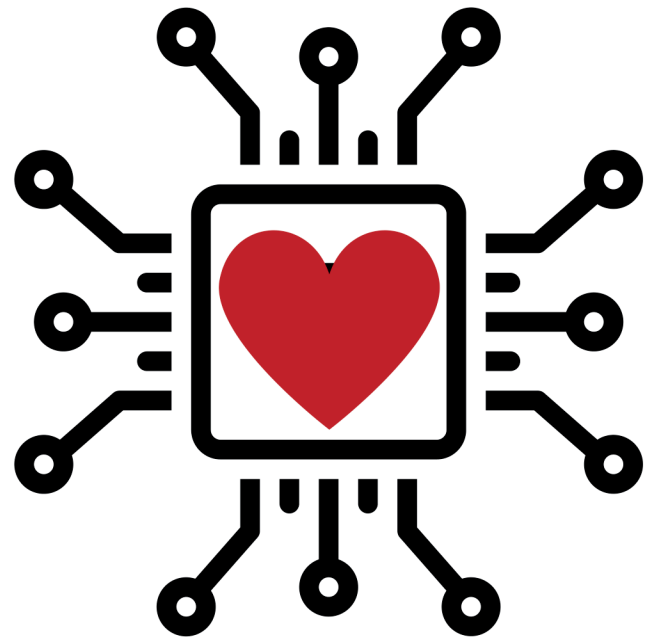


chipin

GIVING PROCESSING A PURPOSE

Every time a credit card is swiped at your business, a part of the transaction fee is contributed to charitable causes. Turn every purchase into an opportunity for positive impact.



HOW IT WORKS...

- ✓ We evaluate your merchant statement to ensure savings, promising to match or beat your current rates.
- ✓ We tailor a strategy that maximizes your profits, provides the optimal processing environment, and fosters business growth.
- ✓ After you begin processing, select a 501(c)(3) charity of your choice, and Chipin will contribute a portion of the processing fees to support their cause.

Why chipin

- Payment Processing powered by MiCamp Solutions
 - Founded in 2007
 - 50,000 Signed Clients Across 15+ Sponsor Banks
 - \$50 Billion Payments Processed Annually
 - Fiserv's Top Iso
 - Fiserv Chairman's Circle
 - Inc. 5000: 2019 | 2020 | 2021 | 2022 | 2023
- Zero Downtime during conversion.
- 24/7 Onshore Support: Immediate assistance, anytime.
- Global Payment Acceptance: Supports all major payment methods.
- Top-tier Security: Highest security and technical standards.
- Free POS Service: Versatile and complimentary POS solutions.



Get Started Today!

818.962.4700
info@chip-in.org